

TWIN CITIES

April 2008

homeimprovement®

www.twincitieshomeimprovement.com

Great ideas and resources for your home and garden

Top Floors

A guide to choosing the perfect flooring material

Open-Air Living

Create an outdoor space to relax, entertain and enjoy

Plus 100s More Resources

For improving your home and garden



Beguiling Baths

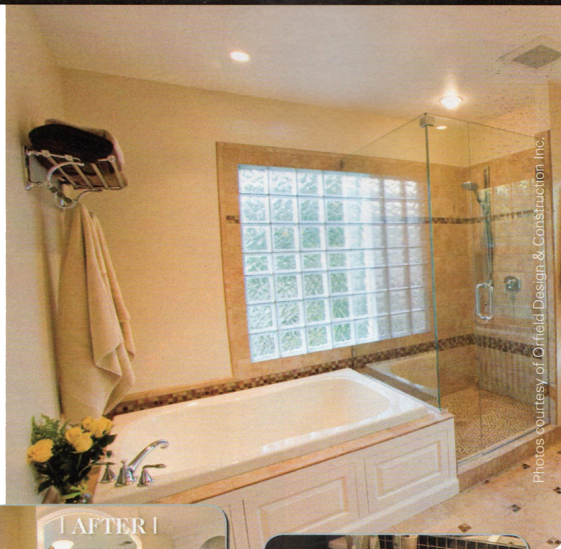
Local projects
offer inspiration

expert advice >> monthly garden planner >> design ideas
hot home products >> tips & trends

Understated Elegance

Designed by Orfield Design & Construction Inc.

The Cost \$48,000



| THE MATERIALS |


- **CABINETS & MIRROR:** Custom made by K&L Cabinets
- **COUNTERTOPS:** Cambria quartz in Burton Brown
- **TOILET:** TOTO's Sedona Beige Drake, elongated
- **BATHTUB:** Grohe's Jason JL535 with Chrome Seabury Tub Filler
- **SINK:** Kohler's biscuit undercounter lav
- **SHOWER FLOOR:** Sumatra frosted pebble mosaic from RBC Tile & Stone
- **TUB & SHOWER TILE:** Pietre Blera from RBC Tile & Stone
- **TUB SPLASH TILE:** OC Tessera coppertone from RBC Tile & Stone



| THE MISSION |

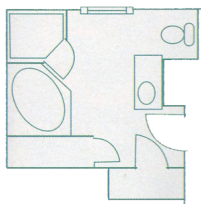
The charm and formality of this 1920's home somehow escaped the bathroom until these homeowners asked for a soft palate of muted, earthy colors for their remodel. More light and storage now inhabits the space, along with a frameless shower on a pebble tile foundation.

| THE HIGHLIGHTS |

The countertop, sconces, shower controls and shelves were all placed to accommodate 1 foot of height difference between the owners. 

Editorial Resources begin on page 40.

| FLOOR PLAN BEFORE |



| FLOOR PLAN AFTER |

